

BETHANY+VILLAGE

THE ART OF LIVING

THE COTTAGES • SUNFLOWER TERRACE • BETHANY HOME



At Bethany Village, we believe seniors should be empowered creatively, spiritually, and emotionally to do what they do best. Where others see challenges, we see potential. Where others see loss or decline, we see opportunity and capacity.

Through tapping into the talents of our residents, the rich arts and cultural life in Lindsborg, and inspiration from our Creator, we engage our community of seniors with creative activities, lifelong learning, and intergenerational opportunities—as well as instill a healthy sense of self-fulfillment, value, and friendship. Whether you're a tinkerer, crafter, gardener, musician, quilter, or simply one who appreciates the world of creativity, Bethany Village's "art of living" philosophy helps you make your golden years as healthy and dynamic as possible.

WE BELIEVE

- People aren't content to simply live longer— we want to age well
- Seniors should be able to take part in their favorite activities
- Creative arts benefit body, mind, and spirit—and offer opportunities for connection with others
- Using our creative gifts helps us live in and share God's love
- Our organization thrives when our staff is encouraged to be imaginative
- Creativity takes skill and practice, especially the art of care
- Creative living should be inclusive of all people, no matter the ability
- Creativity—and the "art of living" philosophy—is built on profound respect for each other

Supporting you to live your purpose through your own unique creative expression

- Imaginative
- Inspirational / encouraging
- Warm / approachable
- Skillful
- Inclusive

Bethany Village

The Bethany Home Association of Lindsborg, Kansas is first and foremost a Christian Home with a Christ centered atmosphere. The basic philosophy of Bethany Home is to continue the Christian Ministry of caring as done by our Lord and Master, Jesus Christ.

MISSION STATEMENT

Celebrating life's journey together in God's love.

VISION STATEMENT

Bethany Home is a vibrant, inclusive community where individuals receive the support needed to thrive and reach the highest level of independence attainable in a compassionate Christian environment. Highly trained, caring professionals provide peace of mind through thoughtful, personalized service and care, embracing innovation, forward thinking stewardship, and market-leading practices.

APPLICATION POLICY

An application for admission to The Cottages Independent Living, Sunflower Terrace Assisted Living and/or Bethany Home must be completed and returned to Bethany Village, accompanied by a **\$35.00 per person** non-refundable check. The applicant is encouraged to have a personal meeting and/or tour of the facilities. The Admissions Committee will review the application, with priority placement according to level of need or in order of the date on the application.

ADMISSIONS POLICY

An admission fee of \$150 will be charged upon admission to assisted living or \$350 to long-term care to cover costs for individual record and room preparation.

Once accepted for admission to assisted living or long-term care, residents and/or their families may request a face to face meeting prior to the admission date. Payments for room, board and personal care begin on the date of admission and are payable one month in advance. The payment period runs on a calendar month.

Should the resident be discharged and return to the facility within 12 months, this fee will not be charged again. If the resident is discharged and returns to the facility after 12 months, an admission fee will apply.

Admission fees will not be charged due to a change in the resident's level of care. For example: A resident moving from assisted living to long-term healthcare will not be charged another admission fee.

BETHANY+VILLAGE

THE ART OF LIVING

CONTACT INFORMATION



THE COTTAGES

321 N. Chestnut | Lindsborg, KS

785.227.2334

mspohn@bethanyhome.com



SUNFLOWER TERRACE

821 E. Swensson | Lindsborg, KS

785.227.8331

mhanson@bethanyhome.com



BETHANY HOME

321 N. Chestnut | Lindsborg, KS

785.227.2334

marketing@bethanyhome.com

Empowering seniors
creatively, intellectually,
and emotionally to do
what they do best.

BETHANY+VILLAGE

785-227-2334

Ext.
111

Kris Erickson

CEO

Melissa Brumbaugh

Administrator

Laura Clark

Office Manager

110

Jamie Priddy

Dietary Manager

121

Bethany Home Kitchen

Dining Reservations

785-227-2846

Linda Call, Marcus Vinyard

Activities

123

Delwin Koons

Maintenance

125

Andrea Johnson

Human Resources

126

Pastor Jim Strasen

Temporary Chaplain

133

Jennifer Cantrell

Marketing Director

142

Melaney Seehafer

Social Services, Admissions

145

Marilyn Spohn

Billing/Independent Living

146

Lynn Andres, RN

Director of Nursing

159

Wendy Johnson

Skilled Services

182

Maggie Hanson, RN

Sunflower Terrace Operator

200



SUNFLOWER TERRACE

Daily activities like housekeeping, meal planning, cooking, and home maintenance become more difficult with time. **Sunflower Terrace Assisted Living** can remove daily burdens so you can enjoy doing the things you want to do!

Sunflower Terrace Assisted Living is the ideal solution for those who need some attendant care or supervision but still have the ability to maintain their own independence. Spacious and bright apartments are handicap accessible and offer private bedrooms and bathroom, modern kitchenettes with microwave, refrigerator and granite countertops.



Amenities & Options:

Monthly Rent Includes:

- Private apartment & bathroom with zero-entry walk-in shower
- Kitchenette with microwave & refrigerator
- Ample closets & storage
- All utilities (Cable TV & phone service extra*)
- Emergency response system call lights in bedrooms & bathrooms
- Transportation services*

On site storm shelter/ safe room

*Additional fees may apply for some services

- Professional caring staff 24 hour access to:
 - Certified Medication Aides
 - Licensed Nurses
- Personalized Care Plans
- Daily programs, events & outings*
- Wireless Internet

Services available for additional fees:

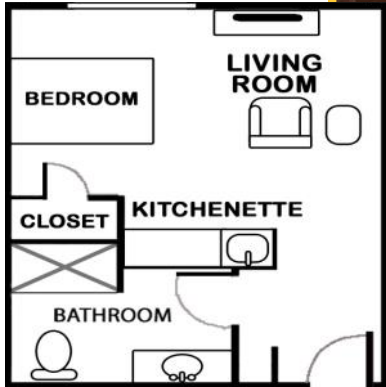
- Personal care assistance
- Weekly housekeeping & linen services
- Ongoing medication management & health monitoring
- On-site Physical, Speech, & Occupational Therapy
- Nutritious daily meals served restaurant style with flexible menu options and between meal snacks
- On-site Exercise room
- Salon Services



821 E. Swensson | Lindsborg, KS 67456
Phone 785-227-8331 | Fax 785-227-8332
www.BethanyVillageKS.com

SUNFLOWER TERRACE

STUDIO APARTMENT



18'6" X 24'
450 Sq. Feet

Full bath,
ample storage,
TV, wireless internet

**Base Rate
\$2,054***

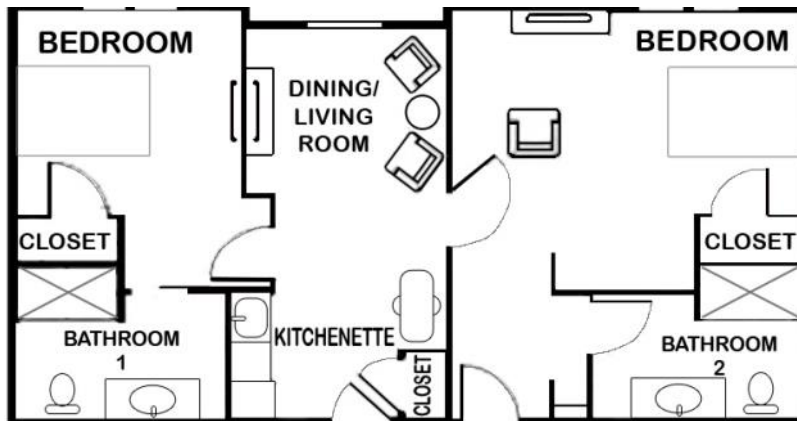
1 BEDROOM APARTMENT



22'6" X 24'
550 Sq. Feet

Bedroom, separate
living and dining space,
Kitchenette, Full bath, TV,
wireless internet

**Base Rate
\$2,371***



2 BEDROOM APARTMENT

41' X 24'
1000 Sq. Feet

2 Bedrooms, separate living and dining space,
Kitchenette, 2 Full baths (Legacy only),
TV, wireless internet

**Base Rate
\$3,495***

Additional \$51.00 per day/ \$1,530* per month for 2nd person; Fees for services may apply

*Rates shown are estimated on a 30 day month; Actual billing based on a daily rate

For a virtual tour

Visit <https://SunflowerTerrace.com>

821 E. Swensson | Lindsborg, KS 67456
Phone 785-227-8331 | Fax 785-227-8332
www.BethanyVillageKS.com

BETHANY+VILLAGE

THE ART OF LIVING

SUNFLOWER TERRACE

Base Rates

Base rate includes private apartment with private bathroom, all utilities, 24 hours access to nursing staff, emergency response system/ call lights in bedroom(s) and bathrooms and an on-site storm/safe room.

| | |
|-----------------------|---------------|
| Studio..... | \$2,054/month |
| Legacy 1-bedroom..... | \$2,371/month |
| Legacy 2-bedroom..... | \$3,495/month |
| Ekdahl 1-bedroom..... | \$2,517/month |
| Ekdahl 2-bedroom..... | \$3,713/month |

**2nd person fee is an additional \$51/day + services if applicable.*

Additional Services & Costs

Levels of Care for Nursing Services

Nursing services may include medication assistance, assistance with bathing/showering, getting dressed or other personal cares and diabetic assistance.

| | |
|--------------|-------------|
| Level 1..... | \$312/month |
| Level 2..... | \$624/month |
| Level 3..... | \$936/month |

Dining

| | |
|---------------------------|-------------|
| Al la carte ordering..... | \$8.35/meal |
| Room Tray Delivery..... | \$2.60/tray |
| 1 meal/day..... | \$237/month |
| 2 meals/day..... | \$459/month |
| 3 meals/day..... | \$664/month |

BETHANY+VILLAGE

THE ART OF LIVING

Housekeeping

| | |
|----------------------------|---------------|
| Weekly..... | \$104/month |
| Monthly..... | \$78/month |
| Heavy/excess cleaning..... | \$31/cleaning |

Laundry

| | |
|------------------------------|-------------|
| Weekly (up to 2 loads) | \$104/month |
| Additional Loads..... | \$16/load |

Phone & Cable

| | |
|-----------------------------|------------|
| Phone & Cable..... | \$47/month |
| Phone Only..... | \$21/month |
| Cable (Basic COX) Only..... | \$29/month |

Transportation

Free transportation within Lindborg city limits (Dala Bus utilized) from 8am to 4pm.

Free transportation for appointments within 25 miles of Sunflower Terrace.

Greater than 25 miles away..... \$31/hour for driver + \$0.56/mile

**This rate is based on the IRS Standard Mileage Rate and is subject to change.*

Other

Care Alert Pendant..... \$161/one time charge
If lost or broken, resident is responsible for replacement cost.

BETHANY+VILLAGE

THE ART OF LIVING

SUNFLOWER TERRACE

Levels of Extra Care and Fees for Services

LEVELS OF EXTRA CARE (done on a routine basis)

| Extra Care Provided | Points / Month | |
|--|-------------------|----------------------|
| Needs verbal reminder to take medication | 1 | |
| Needs medication set up by licensed nurse weekly, in pill boxes | 3 | |
| Needs total staff management of medications of up to 5 prescriptions per day | 4 | |
| Needs total staff management of medications of 6 or more prescriptions per day | 5 | |
| Needs infrequent parenteral drugs administered by licensed nurse | 2 | |
| Needs blood sugar checked < 7 times a week | 2 | |
| Needs blood sugar checked > 7 times a week | 3 | |
| Needs insulin syringes filled weekly by licensed nurse | 3 | |
| Needs frequent assistance changing oxygen bottles | 1 | |
| Needs staff assistance with electronic pacemaker checks | 1 | |
| Needs weight check by order 4 or more times per month | 1 | |
| Needs blood pressures checked order 4 or more times per month | 1 | |
| Needs cueing/reminder to toilet during the night | 1 | |
| Needs cueing/reminder to shower | 1 | |
| Needs assistance with shower/whirlpool | 3 | |
| Needs assistance with dressing | 3 | |
| Needs monthly nail care by general staff | 1 | |
| Needs monthly nail care by licensed nurse (diabetic or has difficult nails) | 2 | |
| Needs cueing/reminder to come to meals or activities | 1 | |
| Needs staff assistance with personal laundry | 1 | |
| Needs assistance keeping kitchen free of spoiled food | 2 | |
| | | |
| LEVEL OF CARE | TOTAL POINT SCORE | EXTRA CHARGE / MONTH |
| Level 1 | 3-6 points | \$312.00 |
| Level 2 | 7-12 points | \$624.00 |
| Level 3 | 13+ points | \$936.00 |

**A level of care point score in the 15+ range might indicate the need to move to the Health Care Center*

BETHANY+VILLAGE

THE ART OF LIVING

SUNFLOWER TERRACE

Levels of Extra Care and Fees for Services (cont.)

FEE FOR SERVICES (done on a short term or occasional basis)

| NURSING RELATED FEES | |
|---|---|
| Short term ordered treatments like foot soaks, heat/ice packs, etc. | \$10.50 per day |
| Heavy or excess cleaning | \$31.00 per time |
| Extra Laundry Service | \$16.00 per load |
| Extra Bedding/Linen Change | \$16.00 per load |
| Assistance to stay with resident during medical visits | \$31.00 per hour |
| Transportation (free within 25 mile radius) | \$31.00 per hour for driver and assistant each, \$0.56 per mile |
| Care Alert Necklace (Initial Charge) | \$161.00 each |
| Replacement of Care Alert Necklace (if lost or broken) | \$177.00 each |
| Phone & Cable TV – Package | \$47.00 per month |
| Phone Only | \$21.00 per month |
| Cable (Basic Cox) TV Only | \$29.00 per month |
| FOOD SERVICE RELATED FEES | |
| Resource (nutritional supplement) | Cost Varies |
| Fruit Balls (laxative supplement) | \$3.25 per 25 |
| Al la carte meals | \$8.35 per meal |
| Delivery charge for room trays | \$2.60 per tray |

BETHANY+VILLAGE

THE ART OF LIVING

SUNFLOWER TERRACE HISTORY

Sunflower Terrace opened as an assisted living residence on March 25, 2014.

There are various apartments available including one and two bedroom, studio, and studio plus apartments (a studio and one bedroom combined).

Rent at Sunflower Terrace includes three meals per day (cooked in-house), weekly apartment cleaning, and linen changes. All utilities are paid except personal phone services and cable TV.

Sunflower Terrace is staffed at all times by Certified Medication Aides (CMA). A Licensed Practical Nurse (LPN) is in the facility Monday through Friday during business hours and is on call 24/7. A Registered Nurse (RN) is also available throughout the week and on call 24/7.

Staff provide monthly vital signs checks and weight checks free of charge. Additional nursing services may be arranged as necessary and are based on resident need/preference and may include: medication set-up or management/administration, pacemaker checks, assistance with personal care, nail care, blood sugar monitoring, personal laundry service, whirlpool baths, and cueing/reminders for activities of daily living (ADLs). (See levels of care and fees)

Residents may drive their own vehicles and open parking is available. Transportation within 25 miles of the facility is free of charge for residents of Sunflower Terrace. The city of Lindsborg 'Dala bus' provides public transportation within a 7 mile radius and will pick up at Sunflower Terrace. Residents may schedule trips via the Dala bus as needed, Monday through Friday. Residents may also opt to have their families (or staff, depending on availability) assist with transportation as well.

Criteria that must be met to be able to live at Sunflower Terrace:

- ◆ No ongoing physical or medical condition requiring a two-person transfer
- ◆ If mobility is an issue, the resident must be able to exit the building without need for total assistance
- ◆ If incontinent, the resident must be able to participate in management of the incontinence.
- ◆ No ongoing skilled nursing need, requiring 24/7 nursing intervention
- ◆ No behavioral symptoms that exceed manageability or require use of a restraint.

Medicare benefits are available under outpatient or part B benefits. Hospice services will require family or Hospice staff support per the individual's need and may require a more intensive level of care, such as our long-term care facility.

Currently, Medicaid or HCBS are not funding sources for our Assisted Living, however some long term care insurances do provide funding, if a physician can support the need for this level of care. Private resources are our main source of payment.

BETHANY+VILLAGE

THE ART OF LIVING

SUNFLOWER TERRACE ADMISSION REQUIREMENTS

Rooms at Sunflower Terrace are unfurnished; you may bring any furniture you like. We will supply each apartment with a microwave and small refrigerator. Any other appliances must be approved by the Operator.

Sunflower Terrace will need copies of your **Durable Power of Attorney (DPOA)** paperwork for both **Health** and **Financial** appointments as well as copies of your **Living Will / Advanced Directives**.

The office will need a copy the front and back of your cards:

- a. Social Security
- b. Medicare
- c. Insurance card(s)

If you have a Long-Term Care (LTC) insurance policy you will need to contact your agent to help you file a claim.

Please let us know the name and contact information for your **Primary Care Physician**. If Sunflower Terrace is managing your care and medications, please report any future doctor appointments to the nursing staff.

Bring ALL of your **medications** with you. (Prescription and over the counter) If the facility nurses will be managing your medications please see the facility nurse or operator.

The nurse or operator will complete an assessment for those who are self-managing medications and provide a lock box for medications. Only residents and those they assign (family member or trusted individual) will have a key and access to the lock box.

The Nurse or Operator will complete a Functional Capacity Screen that identifies areas of independence and areas of need to develop an accurate **Negotiated Service Agreement** and **Healthcare Service Plan**.

If you leave the building and grounds, we ask that you sign IN/OUT in the notebook located at the welcome desk by the front door.

You will be assigned a **mailbox** upon move-in (Located near the front door).

Mail can be forwarded to you at **821 E. Swensson, Lindsborg, KS 67456**

If you want a landline **phone** in your room, please contact a staff member or IT manager for more information.

All rooms are **cable** ready. Sunflower Terrace will provide a mounted flat screen TV in every room. Cable is at an additional cost.

On the day of move in, please meet with the Operator or a business office representative to review the Resident Agreement, facility policies, and to develop a Negotiated Service Agreement and Healthcare Service Plan.

Renter's Insurance is required for all residents of Sunflower Terrace.

Power Strips are allowed in resident apartments, but must be approved by the operator. Plug extenders and extension cords are prohibited at Sunflower Terrace

You are welcome to hang pictures, art, etc. and if you would like help, please ask. We don't want anyone getting hurt so we will help move furniture around as needed.

Bethany Village follows the Kansas State regulations with a 'no tipping' policy. This means that staff are not allowed to individually accept gifts either in money or product. Tipping can jeopardize a license and career. However, a sincere, 'Thank you' is always appreciated!

If moving from a Bethany Home cottage, please alert Marilyn Spohn. (785-227-2334 x 146)

Please contact us with any other questions you may have.