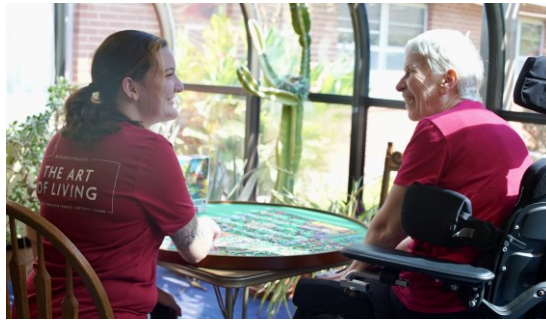


BETHANY+VILLAGE

THE ART OF LIVING

THE COTTAGES • SUNFLOWER TERRACE • BETHANY HOME



At Bethany Village, we believe seniors should be empowered creatively, spiritually, and emotionally to do what they do best. Where others see challenges, we see potential. Where others see loss or decline, we see opportunity and capacity.

Through tapping into the talents of our residents, the rich arts and cultural life in Lindsborg, and inspiration from our Creator, we engage our community of seniors with creative activities, lifelong learning, and intergenerational opportunities—as well as instill a healthy sense of self-fulfillment, value, and friendship. Whether you're a tinkerer, crafter, gardener, musician, quilter, or simply one who appreciates the world of creativity, Bethany Village's "art of living" philosophy helps you make your golden years as healthy and dynamic as possible.

WE BELIEVE

- People aren't content to simply live longer— we want to age well
- Seniors should be able to take part in their favorite activities
- Creative arts benefit body, mind, and spirit—and offer opportunities for connection with others
- Using our creative gifts helps us live in and share God's love
- Our organization thrives when our staff is encouraged to be imaginative
- Creativity takes skill and practice, especially the art of care
- Creative living should be inclusive of all people, no matter the ability
- Creativity—and the "art of living" philosophy—is built on profound respect for each other

Supporting you to live your purpose through your own unique creative expression

- Imaginative
- Inspirational / encouraging
- Warm / approachable
- Skillful
- Inclusive

Bethany Village

The Bethany Home Association of Lindsborg, Kansas is first and foremost a Christian Home with a Christ centered atmosphere. The basic philosophy of Bethany Home is to continue the Christian Ministry of caring as done by our Lord and Master, Jesus Christ.

MISSION STATEMENT

Celebrating life's journey together in God's love.

VISION STATEMENT

Bethany Home is a vibrant, inclusive community where individuals receive the support needed to thrive and reach the highest level of independence attainable in a compassionate Christian environment. Highly trained, caring professionals provide peace of mind through thoughtful, personalized service and care, embracing innovation, forward thinking stewardship, and market-leading practices.

APPLICATION POLICY

An application for admission to The Cottages Independent Living, Sunflower Terrace Assisted Living and/or Bethany Home must be completed and returned to Bethany Village, accompanied by a **\$40.00 per person** non-refundable check. The applicant is encouraged to have a personal meeting and/or tour of the facilities. The Admissions Committee will review the application, with priority placement according to level of need or in order of the date on the application.

ADMISSIONS POLICY

An admission fee of \$185 will be charged upon admission to assisted living or \$410 to long-term care to cover costs for individual record and room preparation.

Once accepted for admission to assisted living or long-term care, residents and/or their families may request a face to face meeting prior to the admission date. Payments for room, board and personal care begin on the date of admission and are payable one month in advance. The payment period runs on a calendar month.

Should the resident be discharged and return to the facility within 12 months, this fee will not be charged again. If the resident is discharged and returns to the facility after 12 months, an admission fee will apply.

Admission fees will not be charged due to a change in the resident's level of care. For example: A resident moving from Sunflower Terrace assisted living to Bethany Home long-term healthcare will not be charged another admission fee.

BETHANY+VILLAGE

THE ART OF LIVING

CONTACT INFORMATION



THE COTTAGES

321 N. Chestnut | Lindsborg, KS

785.227.2334

mspohn@bethanyhome.com



SUNFLOWER TERRACE

821 E. Swensson | Lindsborg, KS

785.227.8331

KKennedy@bethanyhome.com



BETHANY HOME

321 N. Chestnut | Lindsborg, KS

785.227.2334

marketing@bethanyhome.com

Empowering seniors
creatively, intellectually,
and emotionally to do
what they do best.

BETHANY+VILLAGE

785-227-2334

Ext.

Kris Erickson

Chief Executive Officer

111

Andi Willems

Chief Financial Officer

122

Joe Benter

Bethany Home Administrator

195

Amy Mapes, BSN, RN

Director of Nursing

159

Jema Koehn, LPN

Assistant Director of Nursing

144

Linda Call, Marcus Vinyard

Activities

123

Delwin Koons

Maintenance / Environmental Services

125

Andrea Johnson

Human Resources

126

Pastor Ethan Feistner

Chaplain

133

Jennifer Cantrell

Marketing Director/Development

142

Chelsea Deines

Social Services, Admissions

108

Marilyn Spohn

Billing/Independent Living

146

Jamie Priddy

Dietary Manager

121

Bethany Home Kitchen

Dining Reservations

785-227-2846

Wendy Johnson

Skilled Services

182

Kaitlynn Kennedy

Assisted Living Operator

200

All prices and rates are subject to an annual increase effective October 1



THE COTTAGES

THE COTTAGES Independent Living by Bethany Village offer comfort and security in a retirement community without the hassles of home maintenance. Single and multi-bedroom units are available and include a fully furnished kitchen, handicap accessible bathrooms, and laundry facilities.

Located just across the street from the main campus, Independent Living residents are invited to join in the many activities and events at **Bethany Home**.

Duplexes:

2 Bedroom w/unfinished basement & attached garage

3 Bedroom w/finished basement & attached garage

**Furnished with: Range, Refrigerator, dishwasher, water softener & washer/Dryer
(Call for pricing)**

Cottage Apartments:

Approximately 600 Square Feet

Income based* rent starts at \$344/month

(Not government subsidized housing)



- All Independent Living residents are welcome and encouraged to take part in all activities at Bethany Home
- Meals are available in the Bethany Home Dining Hall at a minimal cost
- Cottage apartments are furnished with a range, refrigerator, garbage disposal, carpeting in bedroom and living area; vinyl flooring in kitchen and bathrooms
- The Cottage Activity Center is available to all residents for activities or get-togethers and may be reserved for no cost
- Laundry Room facilities are available adjacent to the Cottages; hookups for washer and dryers are available in duplexes and select cottage units
- Applicants must be 62 years old or disabled



**Contact Marilyn Spohn
for more information**

321 N. Chestnut | Lindsborg, KS 67456

Phone 785-227-2334 | Fax 785-227-3138

www.BethanyVillageKS.com

BETHANY+VILLAGE

THE ART OF LIVING

THE COTTAGES Independent Living & Duplexes

Please contact Marilyn Spohn, 785-227-2334 ext. 146 with questions or for more information on Bethany Village Independent Living.

General items of interest:

- **Smoke-free Campus** - Smoking is prohibited on all Bethany Village properties
- **All units are maintenance free.** Bethany Village takes care of all the typical home maintenance, including lawncare and snow removal.
- **Utilities:** The resident is responsible for the following:
 - Cottages (1 Bedroom): Electricity, telephone, cable television, and internet
 - Duplexes (2-3 Bedroom): Electricity, telephone, cable television, and internet, gas, water, sewer, and trash service
- **Cable TV** is available for \$38.00 per month and will be added to your monthly rent payment
- Residents are welcomed and encouraged to take part in all Bethany Home **activities**. Check the calendar for bingo, crafts, baking, parties, exercise classes, movies, game days, choir chimes, volunteer opportunities, and many other special events and programs. Calendars and newsletters will be delivered to The Cottages monthly or are available in the Bethany Home office.
- The **Bethany Home Activity Center** was built to provide a variety of activities for all residents of Bethany Village. The Library has a vast array of books, current publications, newspapers and a computer with internet access available for Cottage residents. A pool table is located in the Activity Center for your use as well.
- The Chaplain of Bethany Village conducts Sunday morning worship service at 9:30am and Wednesday afternoon Chapel Services at 2:15 pm.
- **General Public Transportation** is available Monday through Friday through the **Lindsborg Senior Center**. Please call 785-227-3983 for more information.

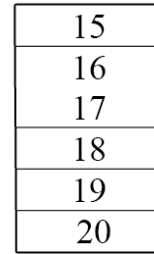
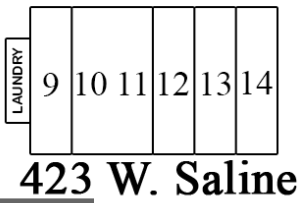
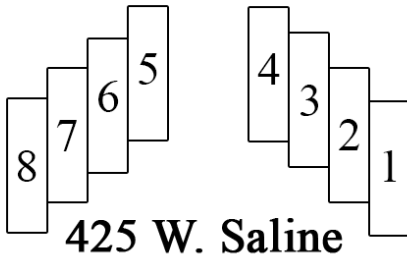


BETHANY HOME

THE COTTAGES

INDEPENDENT LIVING

W. SALINE STREET

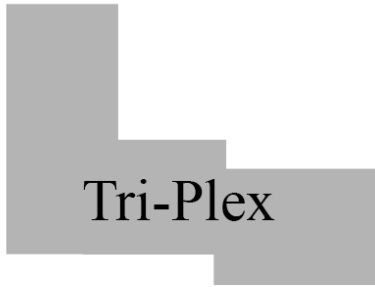


PARKING

421 W. Saline

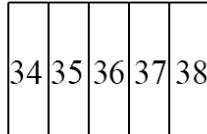
PARKING

COTTAGE LANE



Tri-Plex

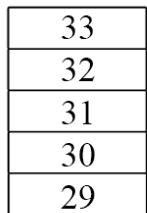
408 W. State



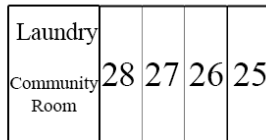
PRIVATE
HOMES
& PROPERTY



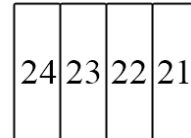
406 W. State



404 W. State



402 W. State



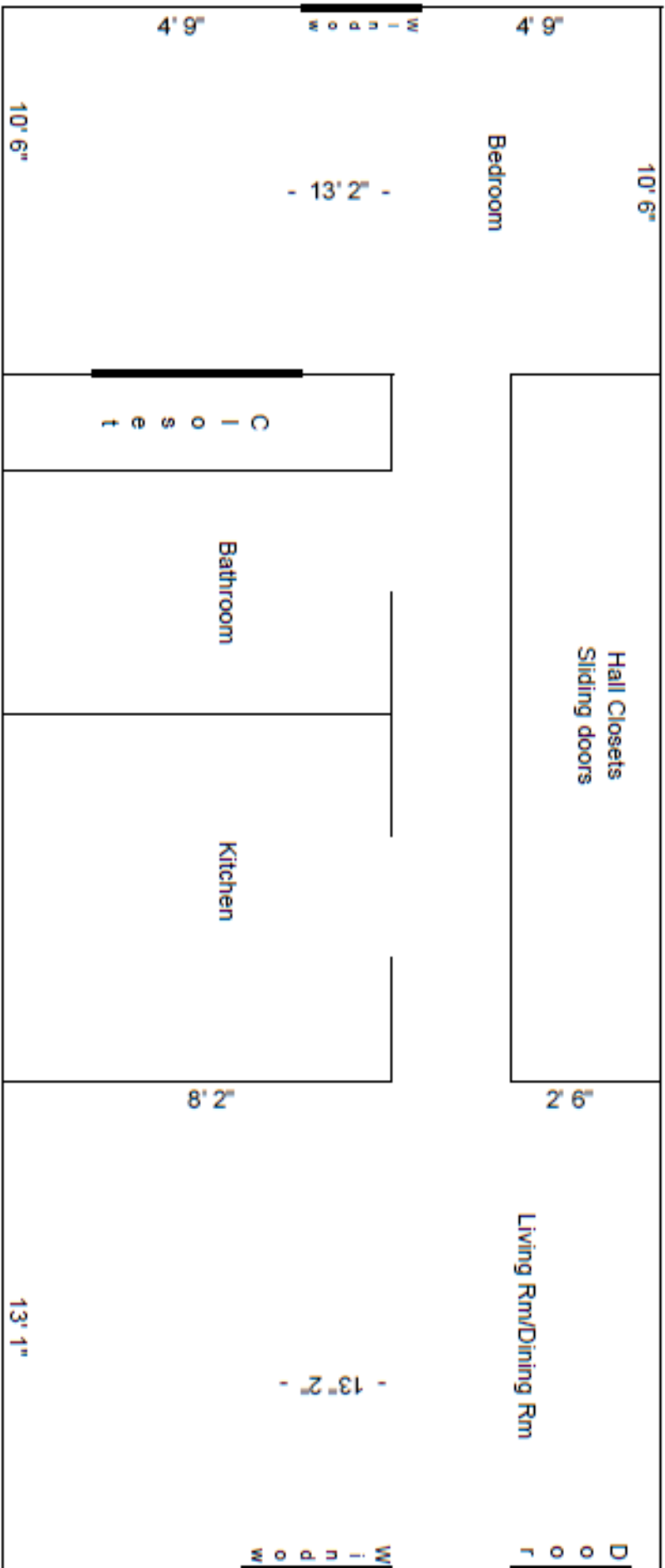
PARKING

PARKING

STATE STREET

CHESTNUT STREET

Map may not be to scale



**The Cottages
Independent Living
Approximate layout**